

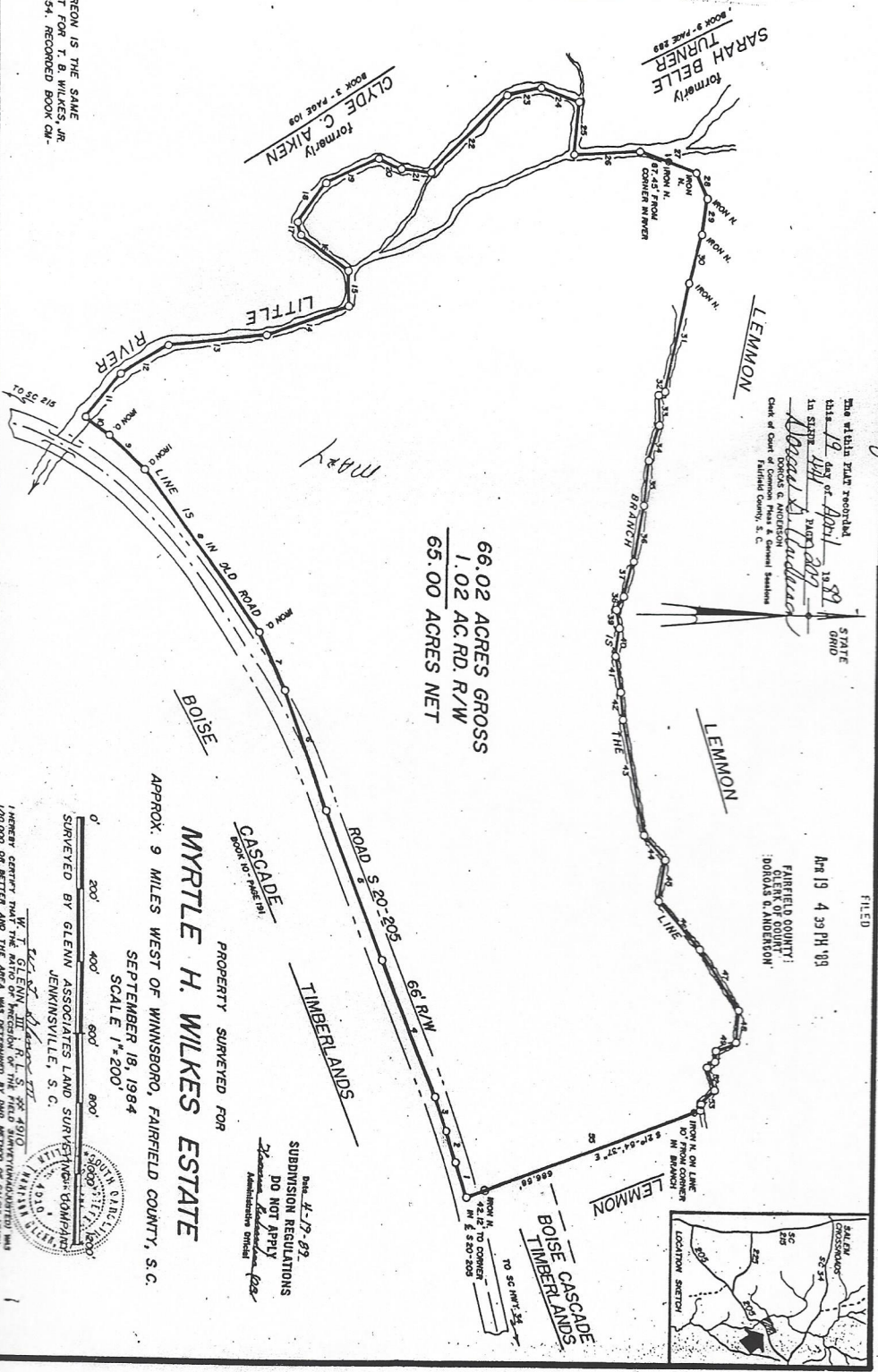
Plat Slide 441, page 207

Slide 441 Page 207

BEARINGS & DISTANCES  
CONNECT TO CORNER

1	S 72° 45' 23" W	101.84
2	S 70° 52' 51" W	98.44
3	S 69° 02' 41" W	410.46
4	S 69° 22' 41" W	439.46
5	S 70° 51' 24" W	351.82
6	S 65° 13' 57" W	177.80
7	S 44° 54' 47" W	138.93
8	S 37° 22' 23" W	85.59
9	S 37° 22' 23" W	152.94
10	N 50° 35' 02" W	154.44
11	N 32° 32' 55" W	270.96
12	N 27° 09' 27" W	238.52
13	N 27° 09' 27" W	238.52
14	N 88° 25' 44" W	165.14
15	N 88° 25' 44" W	37.55
16	S 56° 47' 01" W	134.23
17	S 74° 18' 30" W	158.59
18	N 54° 11' 30" W	148.47
19	N 26° 15' 39" W	178.59
20	N 26° 15' 39" W	79.83
21	N 46° 55' 50" W	296.64
22	N 46° 55' 50" W	96.39
23	N 20° 54' 00" E	112.17
24	N 20° 54' 00" E	148.47
25	S 69° 35' 00" E	178.59
26	N 26° 15' 39" E	79.83
27	N 26° 15' 39" E	100.47
28	S 82° 52' 17" E	309.57
29	S 82° 52' 17" E	17.74
30	S 73° 41' 44" E	137.91
31	S 73° 41' 44" E	49.56
32	S 29° 59' 26" E	83.88
33	N 87° 30' 25" E	103.10
34	N 87° 30' 25" E	159.58
35	S 68° 45' 58" E	104.35
36	S 79° 46' 50" E	40.15
37	S 77° 39' 01" E	78.34
38	S 63° 56' 35" E	161.84
39	N 79° 43' 00" E	175.89
40	S 82° 52' 17" E	323.16
41	N 79° 34' 02" E	89.56
42	N 84° 32' 50" E	79.83
43	N 79° 34' 02" E	116.84
44	N 46° 51' 51" E	175.89
45	S 80° 49' 33" E	202.36
46	N 47° 33' 39" E	60.48
47	N 57° 42' 07" E	30.66
48	S 23° 27' 08" E	28.03
49	S 87° 29' 40" E	69.92
50	S 87° 29' 40" E	53.37
51	S 38° 31' 18" E	68.81
52	N 72° 17' 29" E	68.81
53	S 48° 24' 44" E	68.81
54	S 48° 24' 44" E	68.81
55	S 21° 54' 37" E	68.81

NOTE: THE PROPERTY SHOWN HEREON IS THE SAME AS THAT SHOWN ON A PLAT FOR T. B. WILKES, JR. AS FILED IN FAIRFIELD COUNTY, NOV. 1994, RECORDED BOOK CM- PAGE 240.



66.02 ACRES GROSS  
1.02 AC. RD. R/W  
65.00 ACRES NET

The within plat recorded this 19 day of April 1989 in State of Missouri by David A. Lindell, Clerk of Court of Common Pleas, S. C. Fairfield County, S. C.

FILED  
Apr 19 4 39 PM '89  
FAIRFIELD COUNTY  
OFFICE OF CLERK  
DORIS B. ANDERSON

PROPERTY SURVEYED FOR  
**MYRTLE H. WILKES ESTATE**

APPROX. 9 MILES WEST OF WINNSBORO, FAIRFIELD COUNTY, S. C.  
SEPTEMBER 18, 1984  
SCALE 1"=200'

Submittion Regulations  
DO NOT APPLY  
Administrative Official

SURVEYED BY GLENN JENKINSVILLE, S. C.  
GLENN JENKINSVILLE, S. C.  
1/20,000 OR BETTER AND THE AREA WAS DETERMINED BY IND METHOD OF CALCULATION